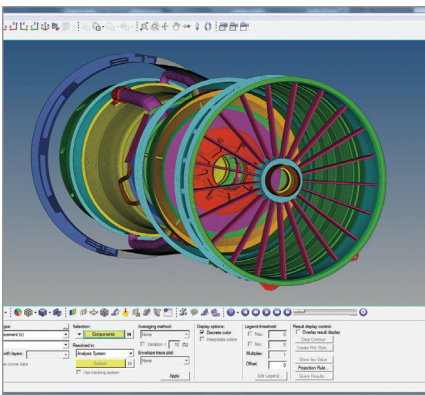
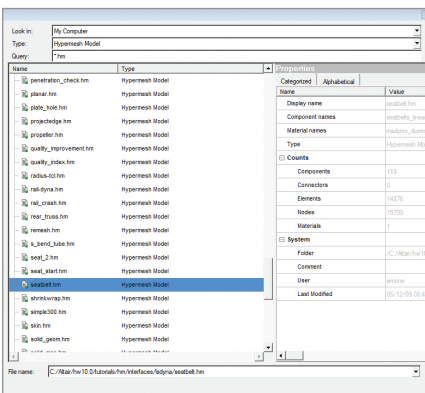


Solution Highlights

- Organize simulation data and files into libraries
- Search libraries efficiently to retrieve contents
- Enable true collaboration with other team members
- Work with latest files due to data version control
- Seamlessly connect to corporate PLM systems



Organize CAE Data, Collaborating with the Team



Explore Local Resources and Connect to PLM Systems

HyperWorks® Collaboration Tools

Collaboration Tools at Users' Fingertips

HyperWorks desktop products offer a tightly integrated set of features for efficient simulation data organization and management. The Collaboration Tools can be used out-of-the-box by every individual HyperWorks user, and they can be used by teams, shared over the network, enabling data access and collaboration on CAE projects.

Features

Explore Dialog

- Integrated into all HyperMesh® and HyperWorks Desktop native file dialogs
- Easily search and retrieve files
- View properties associated with files
- Capture knowledge via automatic metadata extraction

Organize Browser

- Organize simulation data and files into libraries
- Browse libraries to find and retrieve contents
- Search for information by using simple keyword search or advanced queries
- Retain pedigree via full version control
- View content properties and compare versions
- Synchronize libraries and workspaces to work with up-to-date information
- Manage personal data or collaborate with team database

Connect HyperWorks to PLM

- Seamlessly connect to corporate PLM systems
- Search & retrieve directly within PLM repository
- Retrieve and load CAD files directly into HyperMesh and HyperWorks Desktop

Data-enable Automated Processes

- Provide access to data required by automated processes
- Publish data generated by processes for knowledge capture and reuse

Benefits

Access to Information

Collaboration Tools provide users with the ability to quickly search and retrieve their simulation data and files so all the latest information is always available.

Knowledge Capture

Automatic metadata extraction and indexing captures information about simulation data and files, with no burden on the user.

Collaborate with the Team

Collaboration Tools can be used in personal or in team mode, which provides users with access to information shared over the network, enabling out-of-the-box and active collaboration with teammates on CAE projects.

Connect to Remote Data Stores

Users can seamlessly retrieve information such as CAD files into HyperWorks from a corporate PLM system, eliminating the need to leave their CAE authoring environment to search for these files.

Organization of Data

The Collaboration Tools' intuitive and extensible data model allows users to easily organize and relate their CAE data and files in a natural, user-friendly way.

Automate

CAE processes, which can be automated using HyperWorks Automate, all require data as inputs and generate data as outputs. Store and manage this data using HyperWorks Collaboration Tools in order to make input data – such as CAD, loads, or material info – accessible when needed by a process task and output data – such as meshes, results, or reports – accessible for knowledge capture and reuse.