

## Why Compute Manager?

- **Save time:** With Compute Manager it's easy to submit jobs and manage data, thanks to a powerful GUI with smart, simplified interfaces
- **Be more productive:** Engineers can spend more time focused on their work and not get bogged down in complex IT tasks
- **Increase ROI:** Consolidate access to applications and optimize license availability, to extract more value from software investments
- **Reduce errors and improve consistency:** Embed your company's best-practice "know how" directly into Application Definitions used for job submission



"With Compute Manager it's much easier for our engineers to manage simulation jobs and data. Compute Manager is a **key enhancement to our PBS Works environment.**"

Tower International

# Compute Manager™

Simplify HPC Job Submission, Management and Monitoring

Compute Manager is a Web-based job submission and management portal that hides the complexities of high performance computing (HPC) by bridging the gaps between users and their distributed applications in an intuitive way. With Compute Manager, users gain a simple, powerful and consistent interface for submitting and monitoring jobs – so end users only have to concern themselves with the data and applications they wish to run, and nothing more.

## Customers choose Compute Manager to:

- Make it easier to run, monitor and manage HPC jobs
- Easily visualize data and results remotely
- Access multiple clusters with disparate applications via a single unified GUI
- Automate job submission tasks to maximize user productivity while improving throughput
- Diagnose remote jobs without downloading huge results files
- Eliminate the need for complex HPC training

## Key Capabilities:

### Submitting and Monitoring Jobs

- Easily submit jobs using Compute Manager's web GUI, offering simple "drag-and-drop" interfaces with pre-populated defaults
- Easily define and configure applications for job submission via PBS Application Services (PAS)
- Minimize the effort needed to write, modify and test complex application scripts
- Save commonly used applications and inputs as profiles
- Handle hundreds of thousands of jobs with a single instance
- Get advanced load balancing support with high scalability
- Display all currently running jobs, queued jobs and completed jobs
- View/edit job output files prior to job submission or during execution (runtime)
- Easily drag and drop project files onto applications for fast job submission

### Managing Remote Files and Data

- Get real-time access to the cluster remote file system
- Easily browse & modify remote files
- Use standard, familiar file operation tools
- Automate staging of input and output files
- Explore huge datasets directly on the server side
- Easily filter and group jobs to better clarify monitoring output

## Reviewing Results

### Results Visualization Service:

A tightly integrated extension to Compute Manager that allows exploration of huge data sets directly on the server side

- Allows visualization of animation and plot data for running and completed jobs through the Compute Manager file viewer
- Highly intuitive user interface
- Performance improvement in handling series result files such as RADIOSS and Dyna animation
- Accessible from Job Monitoring interface as well as remote file browser
- Provides advanced job monitoring capability through inspecting and visualizing data from application log files
- Provides ability to remotely execute/save result templates for extracting and visualizing results from huge result files

### Access Management Service

Easy to use graphical interface for managing access controls and policies for users

- Specify which users and/or groups can use certain applications
- Share application profiles with specific users and/or groups

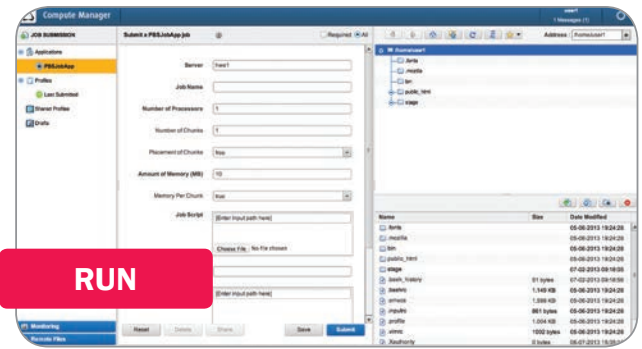
## Installation & Deployment

Altair recognizes the importance of making HPC systems easy to deploy, configure and use. As a result, Compute Manager is offered as out-of-the-box product with minimal configuration required.

Additionally, Altair offers professional services to ensure fast and efficient deployment, customized to your global business processes. Services span from basic installation on clients and/or servers to the complete setup of a turnkey HPC private cloud solution.

## Supported Platforms

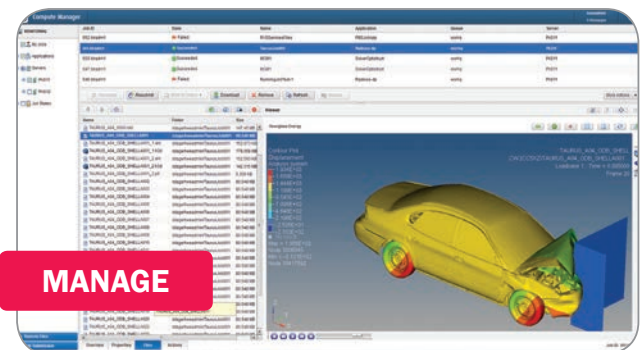
- **Operating Systems (Server)**
  - Windows 64bit
  - Windows Server 2008
  - Windows Server 2008 R2
  - Linux 64bit
  - SLES 10/11
  - RHEL 5/6
  - CentOS 5
- **Supported Browsers (Clients)**
  - Windows: Firefox, Chrome and Internet Explorer
  - Linux: Firefox, Chrome
  - Mac OS X: Safari



Intuitive drag and drop interface for job submission



Monitor current jobs with filtering and grouping capabilities



3D animations & 2D plots to review & visualize results on the server

## The PBS Works Suite

Compute Manager combined with these other PBS Works products delivers a comprehensive HPC workload management solution:

- **PBS Professional** for market-leading workload management
- **PBS Analytics** for reporting and accounting
- **Display Manager** for remote visualization

Learn more at [www.pbsworks.com](http://www.pbsworks.com)



1820 E. Big Beaver Rd., Troy, MI 48083-2031 USA  
Phone: +1.248.614.2400 • Fax: +1.248.614.2411  
[www.altair.com](http://www.altair.com) • [info@altair.com](mailto:info@altair.com)

For more information about Compute Manager, visit [www.pbsworks.com](http://www.pbsworks.com) to request a quote or contact an account manager.

Copyright © 2014 Altair Engineering Inc. All Rights Reserved for: HyperWorks On-Demand™, PBS Works™, PBS Professional™, GridWorks™, PBS GridWorks®, PBS™, Portable Batch System®, PBS Analytics™, Compute Manager™, Display Manager™, PBS Desktop™, e-BioChem™, e-Compute™ and e-Render™. All other marks are the property of their respective owners.